



مسكني الذكي
Maskni Alzaki

SHAPING SMART SOLUTIONS.



Introduction of Maskni Alzaki

Maskni Alzaki is a division of HiTech Group working to provide premium quality UPVC and windows & doors in Saudi Arabia. We are expert in providing modern designs of windows and doors, tailored to meet the new architectural and modern construction trends.

Our commitment to our trusted clients is set on providing durable, reliable, stylish, and unique designs of UPVC and WPC doors and windows. Maskni believes to make homes and offices a place of comfort and safety for our customers.



HiTech
GROUP



مسكني الذكي
Maskni Alzaki

Message of Our CEO

“At Maskni Alzaki, our core belief is that innovation and quality drive success. Our products are designed not only to meet the needs of our clients but also to contribute to a sustainable future. We are proud to serve the Kingdom of Saudi Arabia, providing UPVC and WPC solutions that enhance the beauty, security, and functionality of every project we are part of. Our journey is driven by trust, hard work, and an unwavering commitment to excellence.”



Maskni's Brief History

Analysing the new architectural trends leaning towards modern construction styles. Windows and doors play a vital role in refining the structure of a place. Keeping this thought in mind Maskni brought the innovation of UPVC doors and windows offering multiple designs that resonates with the unique taste of Saudi people.

Over the years Maskni has , become synonymous with reliability and quality. Our journey began with a mission to provide cost-effective yet premium-quality products to support the region's rapid urbanization. With years of expertise and dedication, we have successfully established a strong presence in the Saudi market, offering state-of-the-art solutions that exceed expectations.



Our Core Values



UPVC Windows & Doors.

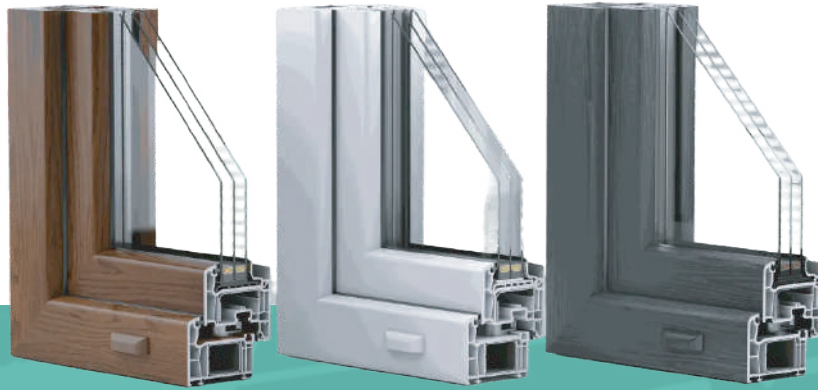


مسكني الذكي
Maskni Alzaki

At Maskni Alzaki, we provide top-tier UPVC windows and doors designed to offer exceptional energy efficiency, durability, and aesthetic appeal, making them the perfect solution for modern homes across Saudi Arabia.



UPVC Windows



UPVC Doors



WPC Doors



Our Partners



SCHÜCO

PARTNER

Authorization Letter

SCHÜCO

Schüco Middle East Windows & Façade Systems LLC
PO Box 371260, DAFZA, Dubai

Tel. +971 4 207 9500
E-mail InfoME@schueco.com

AUTHORIZATION LETTER

Date: 06 Jan 2025

Issued To: Maskni Alzaki (part of Hitech Steel industries)
Riyadh, Kingdom of Saudi Arabia

Systems Covered: All Schüco uPVC Systems*
*(*Note: Fire, Safety, and Security systems require project-specific authorization)*

Scope Covered: i. Fabrication at the above listed facility/facilities
ii. Installation worldwide

To whom it may concern,

We hereby confirm that the above mentioned Company is authorized by Schüco per the above mentioned details.

This authorization is for the above mentioned fabrication Facility/Company only. No fabrication or installation activities whatsoever may be carried out by any other entity or facility, including but not limited to those owned by the above mentioned Company, without the prior written consent of Schüco Middle East.

Schüco Middle East is the sole Schüco entity authorized by Schüco International KG (www.schueco.com) to sell genuine Schüco products - including but not limited to aluminum profiles, uPVC profiles, and accessories - in Schüco Middle East's Territory. Schüco Middle East is also the sole entity authorized to approve, appoint, and authorize Schüco fabricators, installers, and extruders in the Territory. Extruder authorization certificates may also be issued by Schüco International.

If the profiles are sold in mill finish then powder coating, painting, and/or anodizing should be done by an approved applicator using approved material.

This authorization has a validity of one (1) year from the date first written above.

Schüco Middle East highly recommends that project-specific authorization letters be requested to ensure that each project is supported by the most appropriately-qualified fabricator(s) and installer(s).

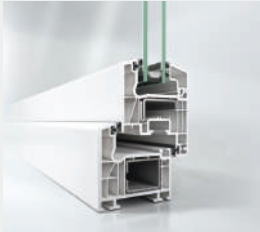
For and on Behalf of Schüco Middle East Windows & Façade System L.L.C.


SCHÜCO
Schüco Middle East
PO Box 371260
DAFZA-Dubai-U.A.E.

Claudia Kaiser
Director
Admin/HR/Marketing

Schüco Middle East
Dubai Airport Freezone,
PO Box 371260, Dubai, United Arab Emirates
Tel.: +971 4 2079500
www.schueco.ae
infoME@schueco.com
Tax Registration Number 100059035400003

شوكو ميديل إيست
المنطقة الحرة بقطار دبي
صندوق بريد 371260 دبي الإمارات العربية المتحدة
هاتف: +971 4 2079500
www.schueco.ae
infoME@schueco.com



Schüco CT70 mm

Features

- 70mm profile depth for superior insulation
- Multi-chamber design for enhanced thermal and acoustic insulation
- Advanced locking systems for increased security
- Customizable options to match diverse architectural styles
- High-quality uPVC for durability and easy maintenance
- Environmentally friendly and recyclable materials

Technical Details

Dimensions

Width of outer frame: **70 mm**

Width of vent frame: **70 mm / 78 mm**

Possible glazing thickness: **6 mm – 40 mm**

Tests and standards

Thermal insulation in accordance with **DIN EN 12412-2: U_f = 1.2 – 1.5 W/(m²K)**

Sound reduction in accordance with **DIN EN ISO 140-3 (maximum)*: R_{w,P} = 46 dB**

Burglar resistance in accordance with **DIN EN 1627: RC2**

Air permeability in accordance with **DIN EN 12207 (Class): 4**

Watertightness in accordance with **DIN EN 12208 (Class): 9A**

Resistance to wind load in accordance with **DIN EN 12210 (Class)**: C5 / B5**

Mechanical loading in accordance with **DIN EN 13115 (Class): 4**

Resistance to repeated opening and closing in accordance with **DIN EN 12400 (Class): 2**

Operating forces in accordance with **DIN EN 13115 (Class): 1**

* Dependent on profile and glazing ** Dependent on profile

Overview

Schüco CT 70 windows combine attractive design with excellent performance. You can choose between two profile shapes to match both the interior and exterior of your home, with silver-grey gaskets adding a sleek, modern touch. A deep glass edge cover complements the slim face widths, ensuring a visually pleasing look while providing high thermal insulation through five insulation cavities and a 70 mm (2 3/4") frame depth.

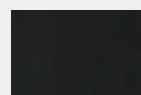
With two continuous gaskets and deeply inset glazing, these windows reduce energy consumption while maintaining transparency. The advanced insulating glass minimizes thermal transmittance and offers superior noise, wind, and rain protection, with optional special glazing for enhanced sound insulation.

Durability and eco-friendliness are key features, thanks to corrosion-protected steel reinforcements that ensure long-lasting stability and reliability. Low energy consumption, reduced CO₂ emissions, and full recyclability make them an environmentally responsible choice. Additionally, their smooth, weatherproof surfaces keep them looking new for years with minimal maintenance.

Standard Colours



Golden
Oak



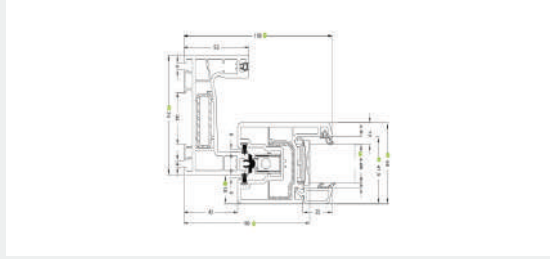
Black
Grained



White



Schüco Softslide



Features

- System reliability thanks to an extensive range of attachment and supplementary profiles
- Double, triple, quadruple and sextuple-vent units with vent weights up to 120 kg are possible in many different configurations
- A higher level of burglar resistance can be achieved by using the lockable gearbox and the aluminium interlock
- High level of design flexibility thanks to different surface finish options with Schüco Automotive Finish and Schüco Unlimited Finish
- Even more transparency is provided by the optional Panorama fixed light, which in addition to its appealing aesthetic also improves the U value of the unit
- The standard outer frame can be combined with a threshold
- A complete solution including threshold connector and seal
- Triple-track outer frame available (up to six sliding vents possible)
- Narrow window vent ensures maximum light penetration
- Individual designs can be created through optional vent glazing bars
- Delivery includes sliding fittings and handles

PVC-U profiles made from suitable material specifically for the most extreme climatic conditions are available.

Overview

Schüco SoftSlide system is characterised by narrow vent and outer frames. These have minimal face widths for maximum light penetration, as well as high levels of flexibility and functionality. The comprehensive range of attachment and supplementary profiles also offers system reliability and unit variability. This means that a variety of unit types can be constructed with sidelights, toplights or bottom lights as well as fixed or moving vent frames. The specially matched brush seals guarantee smooth sliding of the sliding vents and ease of operation. For optimum load transfer even with large vent weights, an additional steel reinforcement is used. A gearbox with anti-lift-out device offers increased security

Technical Details

Dimensions

Width of outer frame: **70 mm**

Width of vent frame: **70 mm**

Possible glazing thickness: **6 mm – 40 mm**

Tests and standards

Thermal insulation in accordance with **DIN EN 12412-2: Uf = 1.4 – 1.5 W/(m²K)**

Sound reduction in accordance with **DIN EN ISO 140-3 (maximum)*: Rw,P = 38 dB**

Burglar resistance in accordance with **DIN EN 1627: RC2**

Air permeability in accordance with **DIN EN 12207 (Class): 2**

Watertightness in accordance with **DIN EN 12208 (Class): 4A**

Resistance to wind load in accordance with **DIN EN 12210 (Class)**: C2 / B2**

Mechanical loading in accordance with **DIN EN 13115 (Class): 3**

Resistance to repeated opening and closing in accordance with **DIN EN 12400 (Class): 5**

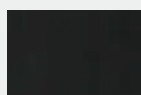
Operating forces in accordance with **DIN EN 13115 (Class): 2**

* Dependent on profile and glazing ** Dependent on profile

Standard Colours



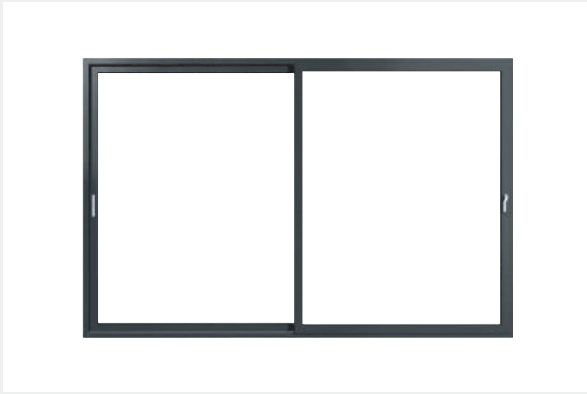
Golden
Oak



Black
Grained



White



REHAU SLINOVA - Sliding UPVC System



Features

Maximize natural light with SLINOVA's expansive glazing area. This sleek sliding door offers exceptional stability and strength.

- **Slim 80mm Frame Depth:** Designed for a minimalist aesthetic without compromising durability.
- **Enhanced Airflow and Circulation:** Larger sliding elements and glass surfaces improve ventilation.
- **User-Friendly Design:** Easy to operate, durable, low maintenance, and simple to clean.
- **Spacious Feel:** Creates a sense of openness in any room.
- **Seamless Integration with Nature:** Bring the beauty of the outdoors into your home.

Technical Details

Frame Depth	Double Frame: 80mm, Triple Frame: 146mm
Sash Depth	54mm
Assembly	Welded Sash, Welded Frame or Mechanical Joint Frame Only
Material	REHAU EcoPuls PVC Profile with Steel Reinforcement (as per system manufacturer's specifications). Sash and Frame: Minimum 40% to 75% Recycled PVC, Vinyl Plus Certified
Seals	Dual Circumferential Brush Seals between Door Frame and Sash Welded Glazing Seal in Corner Area
Maximum Glass Thickness	Up to 32mm
Maximum Sash Weight	Up to 150kg
Maximum Dimensions (W x H)	4m x 2.4m
Performance Ratings	Wind Load Resistance: Up to Class B2/C1 (DIN EN 12210) Rain Permeability: Up to Class 7A (DIN EN 12208) Air Permeability: Up to Class 4 (DIN EN 12207) Sound Reduction: Up to $R_{w,P}$ - 33dB Glazing: 24mm ~ 40mm. Steel thickness: 2.0 – 2.5mm
Finishes	Pure color for white profile. Laminated colors with wooden or grind texture.

Standard Colours



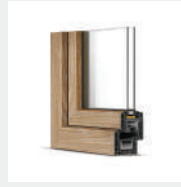
Golden
Oak



Black
Grained



White



Tilt & Turn Windows

Features

REHAU uPVC tilt & turn windows offer flexible ventilation with a stylish design. Tilt inward for partial airflow or fully open for easy maintenance and a fire escape solution—perfect for tight spaces!

- **Flexible Ventilation:** Tilt inwards from the top for limited ventilation or fully open from the side for maximum airflow
- **Easy Maintenance:** The full opening feature simplifies cleaning and maintenance.
- **Fire Escape Solution:** Inward opening configurations serve as an effective fire escape.
- **Space-Saving Design:** Perfect for areas with restricted external space.

Technical Details

Profile Width	Available in 70mm for Tilt & Turn System
Internal Chambers	5 Chambers
Thermal Isolation	Uf = 1.3W/m ² K
Sound Isolation	Up to 45dB
Air Tightness	Class 4
Water Tightness	Class 9A / E 750
Glazing	8mm
Finishes	Pure color for white profile Laminated colors with wooden or grind texture

Overview

Outstanding Insulation: The 70mm Euro Design profile ensures energy efficiency with thermal and acoustic insulation, keeping your space quieter, comfortable, and cost-effective.

Enhanced Security: The REHAU Euro Design 70mm system ensures security with advanced locks, reinforced profiles, and galvanized steel for added strength and peace of mind.

Elegant Design: The Euro Design 70mm system offers style and functionality with versatile finishes to complement any architecture, adding modern sophistication to your space.

Durability and Low Maintenance: Made from premium uPVC, the Euro Design 70mm windows resist weathering, corrosion, and fading. Their smooth surface makes cleaning effortless and maintenance minimal.

Eco-Friendly Choice: REHAU's Euro Design 70mm system supports sustainability with eco-friendly, recyclable uPVC, reducing environmental impact and your carbon footprint.

Versatile Applications: The Euro Design 70mm system suits residential, commercial, and industrial spaces, offering energy efficiency and stylish reliability for any setting.

Standard Colours



Golden
Oak



Black
Grained



White



Casement windows



Features

The REHAU Euro Design 70mm system is a top-notch uPVC window solution, offering advanced technology and quality materials for excellent performance and modern style.

- 70mm profile depth for superior insulation.
- Multi-chamber design for enhanced thermal and acoustic insulation.
- Advanced locking systems for increased security.
- Customizable options to match diverse architectural styles.
- High-quality uPVC for durability and easy maintenance.
- Environmentally friendly and recyclable materials.

Overview

Outstanding Insulation: The 70mm Euro Design profile ensures energy efficiency with thermal and acoustic insulation, keeping your space quieter, comfortable, and cost-effective.

Enhanced Security: The REHAU Euro Design 70mm system ensures security with advanced locks, reinforced profiles, and galvanized steel for added strength and peace of mind.

Elegant Design: The Euro Design 70mm system offers style and functionality with versatile finishes to complement any architecture, adding modern sophistication to your space.

Durability and Low Maintenance: Made from premium uPVC, the Euro Design 70mm windows resist weathering, corrosion, and fading. Their smooth surface makes cleaning effortless and maintenance minimal.

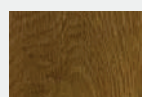
Eco-Friendly Choice: REHAU's Euro Design 70mm system supports sustainability with eco-friendly, recyclable uPVC, reducing environmental impact and your carbon footprint.

Versatile Applications: The Euro Design 70mm system suits residential, commercial, and industrial spaces, offering energy efficiency and stylish reliability for any setting.

Technical Details

Profile width	Available in 70mm for Tilt & Turn System
Internal Chambers	5 Chambers
Thermal Isolation	Uf = 1.3W/m ² K
Sound Isolation	Up to 45dB
Air Tightness	Class 4
Water Tightness	Class 9A / E 750
Glazing	8mm
Finishes	Pure color for white profile. Laminated colors with wooden or grind texture

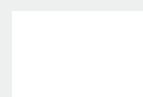
Standard Colours



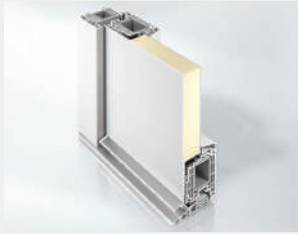
Golden
Oak



Black
Grained



White



Schüco CT70 mm



Features

- **Thermal Insulation and Energy Efficiency:** Keeps your home warm and reduces energy costs.
- **Versatile Configurations:** Available in open-in and open-out styles.
- **Customizable Pane Options:** Choose from equal or non-equal split panes.
- **Durable Hinges:** Options include flag, butt, or cranked hinges for flexibility and durability.
- **Full Aperture Opening:** Dummy mullion for enhanced accessibility.
- **Low Maintenance:** Resistant to weathering for long-lasting performance.
- **Personalization Options:** Decorative glass and Georgian bars for added aesthetic appeal.

Technical Details

Dimensions

Width of outer frame: **70 mm**

Width of vent frame: **70 mm**

Possible glazing thickness: **6 mm – 40 mm**

Tests and standards

Thermal insulation in accordance with **DIN EN 12412-2: $U_f = 1.4 - 1.5 \text{ W}/(\text{m}^2\text{K})$**

Sound reduction in accordance with **DIN EN ISO 140-3 (maximum)*: $R_{w,P} = 38 \text{ dB}$**

Burglar resistance in accordance with **DIN EN 1627: RC2**

Air permeability in accordance with **DIN EN 12207 (Class): 2**

Watertightness in accordance with **DIN EN 12208 (Class): 4A**

Resistance to wind load in accordance with **DIN EN 12210 (Class)**: C2 / B2**

Mechanical loading in accordance with **DIN EN 13115 (Class): 3**

Resistance to repeated opening and closing in accordance with **DIN EN 12400 (Class): 5**

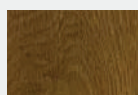
Operating forces in accordance with **DIN EN 13115 (Class): 2**

* Dependent on profile and glazing ** Dependent on profile

Overview

Schüco CT 70 doors offer the perfect blend of aesthetics, energy efficiency, and durability. Available in two profile shapes, they can be customized to complement any home. Their sleek design is enhanced by silver-grey gaskets, a deep glass edge cover, and slim face widths for an elegant look. Smooth, weatherproof surfaces ensure effortless maintenance, keeping the doors pristine for years with minimal cleaning. Thanks to advanced thermal insulation, including multiple insulation cavities and a 70 mm frame depth, these doors provide excellent energy efficiency. A system of two continuous gaskets and deep glazing insertion minimizes heat loss, reducing energy consumption. Superior insulating glass enhances thermal performance while maintaining high transparency. The gasket system and glazing also offer outstanding protection against noise, wind, and rain, with special glazing options available for enhanced sound insulation. Built for longevity, the strong, corrosion-protected steel profiles within the frame and vents ensure lasting stability and reliability. Environmentally friendly, these doors contribute to reduced CO2 emissions and are fully recyclable.

Standard Colours



Golden
Oak

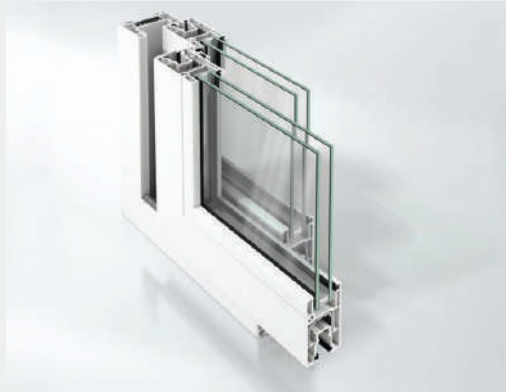


Black
Grained



White

Schüco Softslide



Features

- System reliability thanks to an extensive range of attachment and supplementary profiles
- Double, triple, quadruple and sextuple-vent units with vent weights up to 120 kg are possible in many different configurations
- A higher level of burglar resistance can be achieved by using the lockable gearbox and the aluminium interlock
- High level of design flexibility thanks to different surface finish options with Schüco Automotive Finish and Schüco Unlimited Finish
- Even more transparency is provided by the optional Panorama fixed light, which in addition to its appealing aesthetic also improves the U value of the unit
- The standard outer frame can be combined with a threshold
- A complete solution including threshold connector and seal
- Triple-track outer frame available (up to six sliding vents possible)
- Narrow window vent ensures maximum light penetration
- Individual designs can be created through optional vent glazing bars

Delivery includes sliding fittings and handles PVC-U profiles made from suitable material specifically for the most extreme climatic conditions are available

Technical Details

Dimensions

Basic depth of outer frame: **74 mm**

Basic depth of vent frame: **50 mm**

Possible glazing thickness: **4 mm - 28 mm**

Tests and standards

Thermal insulation in accordance with **DIN EN 12412-2* Uf = 1,4 - 2,3 W/(m²K)**

Air permeability in accordance with **DIN EN 12207 (class): 3**

Watertightness in accordance with **DIN EN 12208 (class): 5A**

Resistance to wind load in accordance with **DIN EN 12210 (class): B3**

Mechanical loading in accordance with **DIN EN 13115 (class): 4**

Resistance to repeated opening and closing in accordance with **DIN EN 12400 (class): 2**

Operating forces in accordance with **DIN EN 13115 (class)**

Overview

Schüco SoftSlide system is characterised by narrow vent and outer frames. These have minimal face widths for maximum light penetration, as well as high levels of flexibility and functionality. The comprehensive range of attachment and supplementary profiles also offers system reliability and unit variability. This means that a variety of unit types can be constructed with sidelights, toplights or bottom lights as well as fixed or moving vent frames. The specially matched brush seals guarantee smooth sliding of the sliding vents and ease of operation. For optimum load transfer even with large vent weights, an additional steel reinforcement is used. A gearbox with anti-lift-out device offers increased security.

Standard Colours



Golden
Oak



Black
Grained



White

REHAU Sliding Doors - uPVC System



Features

Sliding doors are perfect for modern living, combining sleek design with versatility to create a bright, open feel. Slinova sliding doors feature slim sightlines, letting in more light, and work great as patio, entrance, or conservatory doors.

- **Versatile Design:** Suitable for patios, entrances, and conservatories.
- **Slim Sightlines:** Enhances natural light and creates a spacious feel.
- **Variety of Styles and Sizes:** Maximizes glazing and viewing with diverse options.
- **Comprehensive Hardware Solutions:** Provides custom handles, rollers, and locks.
- **Advanced Security:** 12-point locking, Part Q compliant.

Technical Details

Profile Depth	86mm/160mm
Maximum Size	Up to 5m x 2.5m, configuration-based
Assembly	Welded sash and joint frame.
Thermal Performance	Exceeds 1.4 W/m ² K
Maximum Sash Weight	100kg per door using a 3-wheel roller 160kg per door using a 5-wheel roller
Glass Width	4 - 36mm
Finishes	Pure color for white profile Laminated colors with wooden or grind texture.

Applications

School Playgrounds: Safe and secure boundaries.

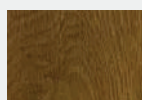
Parks and Recreational Areas: Ideal for enclosing spaces while maintaining visibility.

Airports and Roads: Ensures perimeter security with quick installation.

Swimming Pools and Residential Properties: Perfect for private property security and aesthetic appeal.

Industrial Plants and Zoos: Durable enough for heavy-duty applications.

Standard Colours



Golden
Oak



Black
Grained



White



REHAU Foldables 70 - uPVC System

Features

The REHAU multi-fold door features slim sightlines for more natural light and stunning outdoor views. With 20+ color options and a color-matched frame rebate filler, it's easy to create a personalized, seamless look.

- **Wide Opening:** Panes fold back, enhancing indoor-outdoor connection.
- **Durable Design:** Integrated track reduces movement and adjustments.
- **Smooth Operation:** Coarse brush pile minimizes dirt for smoother action.
- **Slim Sightlines:** Maximizes natural light and offers an unobstructed view.
- **Extensive Color Options:** Choose from 20+ colors to suit any style.

Applications

School Playgrounds: Safe and secure boundaries.

Parks and Recreational Areas: Ideal for enclosing spaces while maintaining visibility.

Airports and Roads: Ensures perimeter security with quick installation.

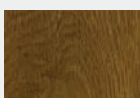
Swimming Pools and Residential Properties: Perfect for private property security and aesthetic appeal.

Industrial Plants and Zoos: Durable enough for heavy-duty applications.

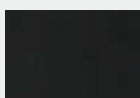
Technical Details

Profile Depth	Available in 70mm
Internal Chambers	5 Chambers
Thermal Isolation	Uf = 1.4W/m ² K
Weather Stripping	Double external with EPDM rubber
Sound Isolation	Up to 45dB
Air Tightness	Class 4
Water Tightness	Class 9 A / E 750
Glazing	24mm ~ 40mm
Steel Thickness	2.0 – 2.5mm
Finishes	Pure color for white profile. Laminated colors with wooden or grind texture.

Standard Colours



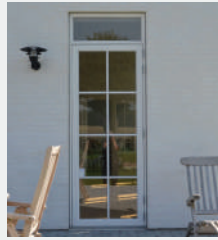
Golden
Oak



Black
Grained



White



REHAU French Doors 70 - UPVC System



Features

REHAU French doors offer charm and practicality, perfect for connecting rooms, patios, or balconies. With benefits like durability, low maintenance, and energy efficiency, they come in various styles and customizable options, including hinges and decorative features like glass or Georgian bars. These doors combine modern performance with timeless elegance..

- **Thermal Insulation and Energy Efficiency:** Keeps your home warm and reduces energy costs.
- **Versatile Configurations:** Available in open-in and open-out styles.
- **Customizable Pane Options:** Choose from equal or non-equal split panes.
- **Durable Hinges:** Options: flag, butt, or cranked hinges for flexibility.
- **Full Aperture Opening:** Dummy mullion for enhanced accessibility.
- **Low Maintenance:** Resistant to weathering for long-lasting performance.
- **Personalization Options:** Decorative glass and Georgian bars enhance aesthetic appeal.

Technical Details

Profile width	Available in 70mm
Internal Chambers	5 Chambers
Thermal Isolation	$U_f = 1.4W/m^2K$
Weather Stripping	Double external with EPDM rubber
Sound Isolation	Up to 45dB
Air Tightness	Class 4
Water Tightness	Class 9 A / E 750
Glazing	24mm ~ 40mm
Steel Thickness	2.0 – 2.5mm
Finishes	Pure color for white profile. Laminated colors with wooden or grind texture.

Applications

School Playgrounds: Safe and secure boundaries.

Parks and Recreational Areas: Ideal for enclosing spaces while maintaining visibility.

Airports and Roads: Ensures perimeter security with quick installation.

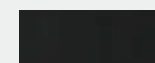
Swimming Pools and Residential Properties: Perfect for private property security and aesthetic appeal.

Industrial Plants and Zoos: Durable enough for heavy-duty applications.

Standard Colours



Golden
OaK



Black
Grained



White

Premium WPC Interior Doors



Introduction

At Maskni, we are committed to providing high-quality, durable, and sustainable solutions for modern interiors. Our WPC (Wood Plastic Composite) interior doors are designed to elevate your living spaces with elegance, functionality, and superior performance. Made from a unique blend of wood fibers and plastic polymers, these doors offer the perfect balance between traditional aesthetics and cutting-edge technology.

Features

Creating a world-class brand with premium WPC doors, designed for exceptional quality and durability. We have remained committed to using the finest materials, delivering consistency and excellence from start to finish. WPC (Wood Plastic Composite) doors offer a perfect blend of durability, style, and sustainability, making them a top choice for modern interiors. Crafted from a combination of wood fiber and high-quality thermoplastics, these doors provide the natural aesthetic of wood while delivering superior performance.

- **Waterproof:** Panes fold back, enhancing indoor-outdoor connection.
- **Eco-Friendly:** Integrated track reduces movement and adjustments.
- **Enhanced Durability:** Coarse brush pile minimizes dirt for smoother action.
- **Customizable:** Maximizes natural light and offers an unobstructed view.
- **Cost-Effective:** Cost-effective WPC doors offer premium quality at an affordable price point.
- **Quick Delivery:** Quick delivery ensures your WPC doors arrive on time, every time.
- **Easy Installation:** Easy-to-install WPC doors save time, simplifying the installation process.
- **Moisture-Resistant:** Moisture-resistant WPC doors prevent swelling or warping in humid conditions.
- **Anti-Termite:** Anti-termite WPC doors provide protection from pests, ensuring longevity and durability.

Why Maskni WPC Doors?

When you choose Maskni WPC doors, you're investing in a product that combines innovation, sustainability, and timeless design. Backed by our commitment to quality and customer satisfaction, we ensure that every door meets the highest standards of performance and aesthetics. Elevate your interiors with doors that are built to last and designed to impress.

Product Categories - WPC Doors



MC-UC

U Channel Door

Technical Specifications

- **Material:** High-quality WPC laminated surfaces.
- **Finish:** Laminated PVC, anti-scratch, available in 6 colors.
- **Dimensions:** Customizable to fit specific installation requirements.
- **Door Panel Size:** Standard and custom sizes available.
- **Thickness:** Options include 35mm, 40mm, 45mm.
- **Application:** Suitable for residential and commercial settings.
- **Product Code:** MC-UC



MC-MMD

Multi-Mullion Door

Technical Specifications

- **Material:** High-quality WPC profiles with PVC films.
- **Finish:** Laminated PVC, anti-scratch, available in 6 colors.
- **Dimensions:** Customizable to fit specific installation requirements.
- **Door Panel Size:** Standard 2200*1000 mm or custom sizes available
- **Thickness:** Options include 42mm and 44mm.
- **Opening Direction:** Swing or sliding, left or right.
- **Hardware:** Includes lock, handle, hinges, as requested.
- **Thickness:** Options include 42mm and 44mm.
- **Application:** Suitable for residential and commercial settings.
- **Product Code:** MC-MMD

MC-MP

Mullion Door

Technical Specifications

- **Material:** High-quality WPC profiles with PVC films.
- **Finish:** Laminated PVC, anti-scratch, available in 6 colors.
- **Dimensions:** Customizable to fit specific installation requirements.
- **Door Panel Size:** Standard 2200*1000 mm or custom sizes available.
- **Thickness:** Options include 42mm and 44mm.
- **Application:** Suitable for residential and commercial settings.
- **Product Code:** MC-MP



MC-GP

Flat Door

Technical Specifications

- **Material:** High-quality PVC laminated surfaces.
- **Finish:** Laminated PVC, anti-scratch, available in 6 colors.
- **Size:** 2200mm x 1000mm standard, customizable.
- **Thickness:** Options include 35mm, 40mm, 45mm.
- **Profile Thickness:** 5mm/7mm.
- **Structure:** WPC U profiles with PVC films + WPC skin core panels.
- **Opening Direction:** Swing or sliding, customizable left or right.
- **Hardware:** Includes lock, handle, hinges, customizable upon request.
- **Product Code:** MC-GP





MC-FP

Decorative Door

Technical Specifications

- **Material:** High-quality PVC laminated surfaces.
- **Finish:** Laminated PVC, anti-scratch, available in 6 colors.
- **Size:** 2200mm x 1000mm standard, customizable.
- **Thickness:** Options include 35mm, 40mm, 45mm.
- **Profile Thickness:** 5mm/7mm.
- **Structure:** WPC U profiles with PVC films + WPC skin core panels.
- **Opening Direction:** Swing or sliding, customizable left or right.
- **Hardware:** Includes lock, handle, hinges, customizable upon request.
- **Product Code:** MC-FP



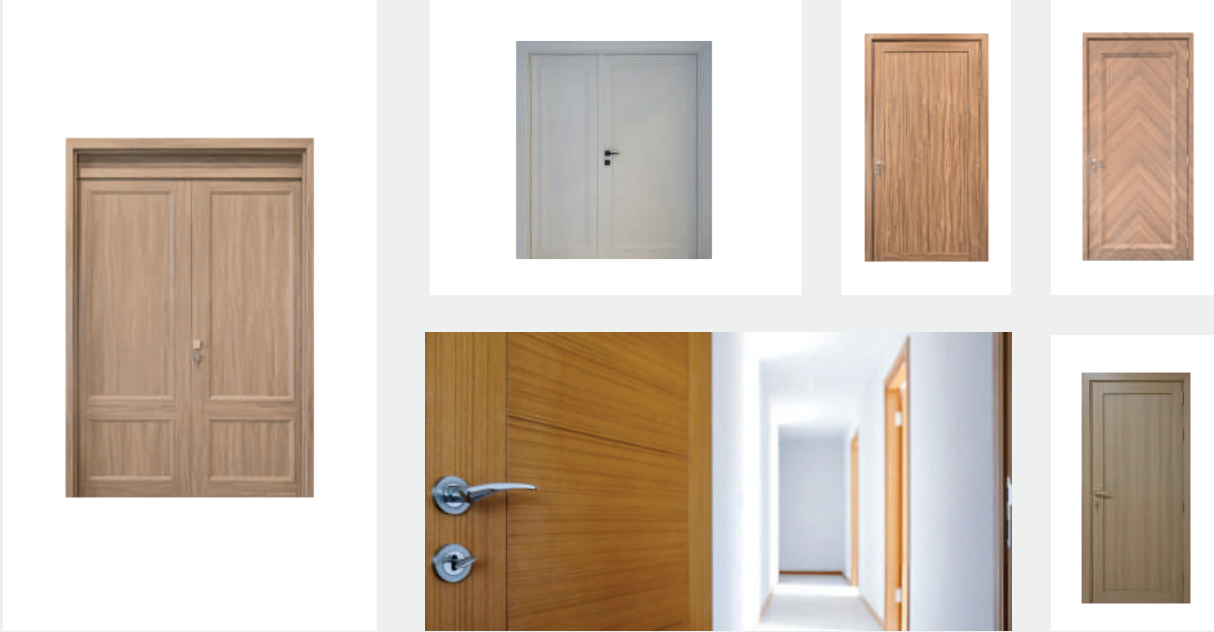
MC-DP

Glass Door

Technical Specifications

- **Material:** High-quality WPC profiles with PVC films.
- **Finish:** Laminated PVC, anti-scratch, available in 6 colors.
- **Dimensions:** Customizable to fit specific installation requirements.
- **Door Panel Size:** Standard 2200*1000 mm or custom sizes available.
- **Thickness:** Options include 42mm and 44mm.
- **Application:** Suitable for residential and commercial settings.
- **Product Code:** MC-DP

Premium Saudi WPC Interior Doors



Introduction

At Maskni, we are committed to providing high-quality, durable, and sustainable solutions for modern interiors. Our WPC (Wood Plastic Composite) interior doors are designed to elevate your living spaces with elegance, functionality, and superior performance. Made from a unique blend of wood fibers and plastic polymers, these doors offer the perfect balance between traditional aesthetics and cutting-edge technology.

Features

Elevate your spaces with our Saudi-Made premium WPC doors, a symbol of world-class innovation, quality, and durability. Designed to withstand the test of time, these doors seamlessly combine style and functionality, reflecting our unwavering dedication to excellence. Every door is crafted with precision, using the finest materials and advanced manufacturing techniques, ensuring unmatched consistency and performance from concept to completion. By choosing our WPC doors, you're investing in a product that embodies durability, sustainability, and timeless elegance, setting a new benchmark in the industry.

- **Waterproof:** Panes fold back, enhancing indoor-outdoor connection.
- **Eco-Friendly:** Integrated track reduces movement and adjustments.
- **Enhanced Durability:** Coarse brush pile minimizes dirt for smoother action.
- **Customizable:** Maximizes natural light and offers an unobstructed view.
- **Cost-Effective:** Cost-effective WPC doors offer premium quality at an affordable price point.
- **Quick Delivery:** Quick delivery ensures your WPC doors arrive on time, every time.
- **Easy Installation:** Easy-to-install WPC doors save time, simplifying the installation process.
- **Moisture-Resistant:** Moisture-resistant WPC doors prevent swelling or warping in humid conditions.
- **Anti-Termite:** Anti-termite WPC doors provide protection from pests, ensuring longevity and durability.

Why Maskni WPC Doors?

When you choose Maskni WPC doors, you're investing in a product that combines innovation, sustainability, and timeless design. Backed by our commitment to quality and customer satisfaction, we ensure that every door meets the highest standards of performance and aesthetics. Elevate your interiors with doors that are built to last and designed to impress.



MW-DL

Double Leaf Doors

Technical Specifications

- **Material:** High-quality WPC profiles with PVC films.
- **Finish:** Laminated PVC, anti-scratch, available in 6 colors.
- **Dimensions:** Customizable to fit specific installation requirements.
- **Door Panel Size:** Standard up to 2400mm*1200mm, customizable.
- **Thickness:** 45mm.
- **WPC Profile Thickness:** 5mm/7mm
- **Opening Direction:** Swing or sliding, left or right
- **Hardware:** Includes lock, handle, hinges, customizable upon request



MW-D

Decor Doors

Technical Specifications

- **Material:** High-quality WPC profiles with PVC films.
- **Finish:** Laminated PVC, anti-scratch, available in 6 colors.
- **Dimensions:** Customizable to fit specific installation requirements
- **Door Panel Size:** Standard up to 2400mm*1200mm, customizable.
- **Thickness:** 45mm.
- **WPC Profile Thickness:** 5mm/7mm
- **Opening Direction:** Swing or sliding, customizable left or right.
- **Hardware:** Includes lock, handle, hinges, customizable upon request.
- **Product Code:** MW-D



MW-S

Sliding Doors

Technical Specifications

- **Material:** WPC U profiles with PVC films and WPC skin core panels.
- **Finish:** Laminated PVC, anti-scratch, available in 6 colors.
- **Dimensions:** Customizable to fit specific installation requirements.
- **Door Panel Size:** Standard up to 2400mm*1200mm, customizable.
- **Thickness:** 45mm.
- **WPC Profile Thickness:** 5mm/7mm.
- **Hardware:** ncludes lock, handle, hinges, customizable upon request.
- **Product Code:** MW-S



MW-S

Standard Doors

Technical Specifications

- **Material:** High-quality WPC profiles with PVC films.
- **Finish:** Laminated PVC, anti-scratch, available in 6 colors.
- **Dimensions:** Customizable to fit specific installation requirements.
- **Door Panel Size:** CStandard up to 2400mm*1200mm, customizable.
- **Thickness:** 45mm.
- **WPC Profile Thickness:** 5mm/7mm.
- **Structure:** WPC U profiles with PVC films + WPC skin core panels.
- **Opening Direction:** Swing or sliding, left or right.
- **Hardware:** Includes lock, handle, hinges, customizable upon request.
- **Product Code:** MW-S



Services

Fabrication

Our expert fabrication of windows and doors ensures high quality, precision, and durability. Using advanced materials and techniques, we create stylish, energy-efficient solutions that enhance the beauty and functionality of any space.



Installation

Our professional installation services guarantee a seamless fit, enhanced security, and improved energy efficiency for windows and doors. Trust our experienced team for exceptional craftsmanship and complete customer satisfaction every time.



Maintenance

Regular maintenance ensures windows and doors perform optimally and last longer. Our expert team handles inspections, repairs, and cleaning to keep your installations in top condition.



www.maskni.sa



maskni@hitech.sa



+966555015791



Building No. 4296, Al Madinah Al Munawarah Branch,
Alfarooq Dist. Riyadh, 12865





www.maskni.sa